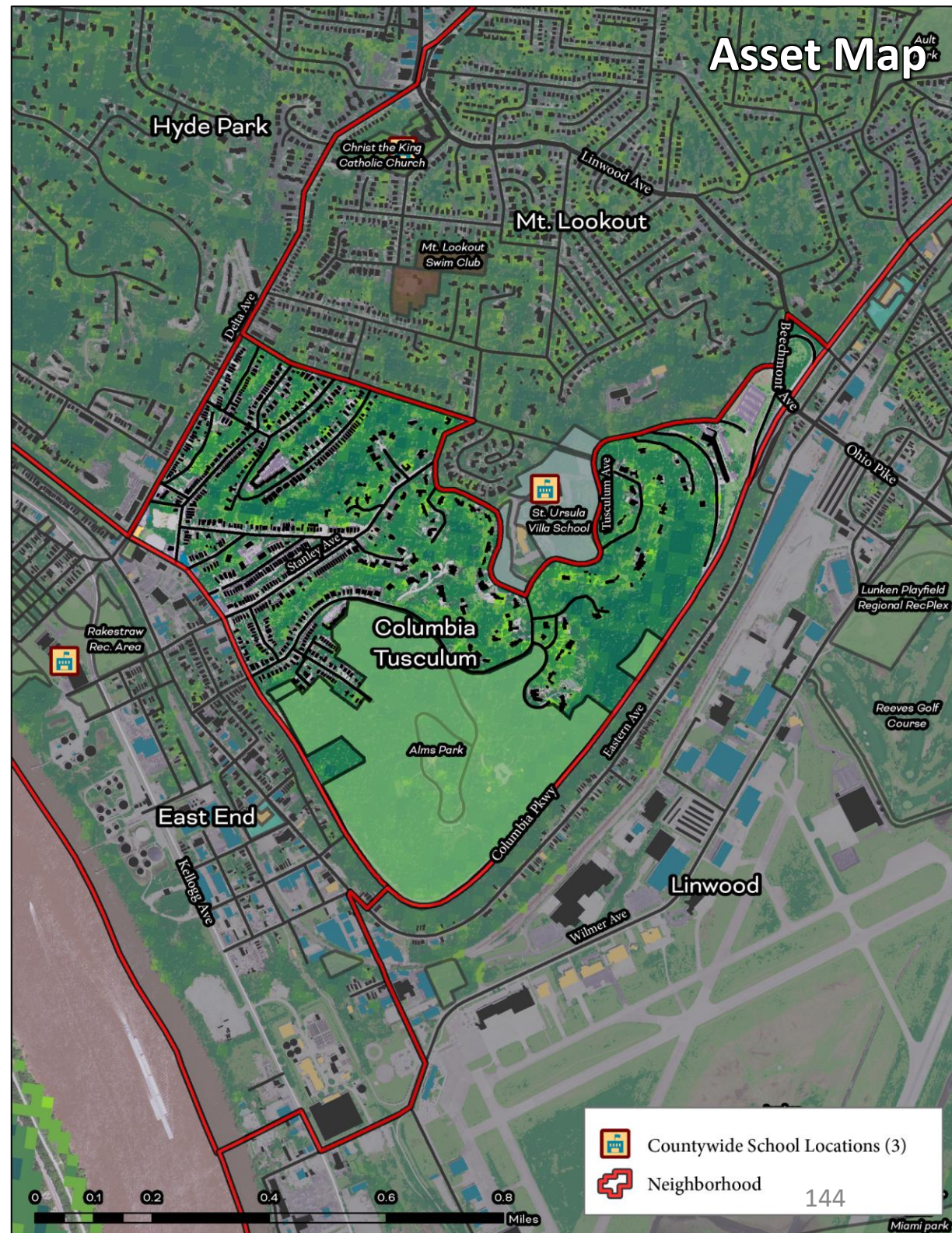


Columbia Tusculum

Cincinnati Neighborhood Profile

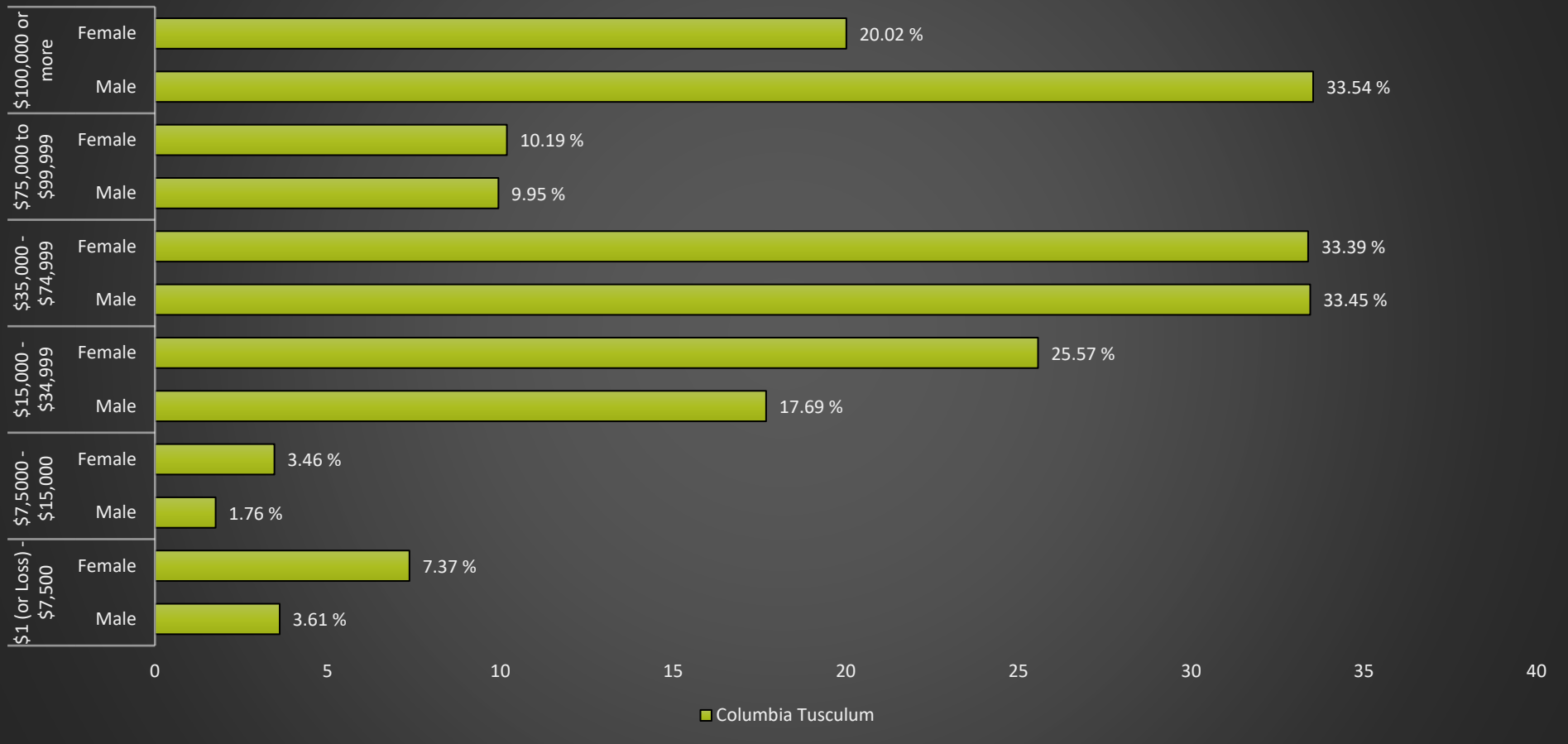
Columbia Tusculum is a predominantly white neighborhood (91%) with 3,198 residents. It has active community councils (Columbia Tusculum Community Council) and a community plan. The average life expectancy for the neighborhood is 84.2 (ranking 4th of all communities assessed). Columbia Tusculum has the lowest prevalence of diabetes (5.8%) and kidney disease (1.6%) for all communities assessed, and a relatively low prevalence of heart disease (3.7%), asthma (7.3%), obesity (23.6%), and high blood pressure (20.1%). It also has the lowest number of residents living with a disability (3%) and the nearly the lowest numbers of residents living without health insurance (4.7%). The neighborhood has 45% tree canopy cover which ranks 5th of all communities assessed. It has “good” access to public transit and “above average” walkability. It has “high” exposure to ozone, diesel particulate matter, and Superfund sites. Around 4.6% of Columbia Tusculum residents are living in poverty (ranked 4th of all communities assessed) and 0.7% of households that receive SNAP benefits (ranked 2nd of all communities assessed). Around 52.6% of residents have a Bachelor’s Degree or Higher.



Columbia Tusculum

Cincinnati Neighborhood Profile

Columbia Tusculum: Annual Income by Gender



Columbia Tusculum Notable Indicators

Average Life Expectancy	% Residents Living with Diabetes	% of Residents Living in Poverty
84.2 (ranked 2nd highest for all communities assessed)	5.8% (ranked lowest for all communities assessed)	4.6% (ranked 4th highest for all communities assessed)

Columbia Tusculum

Cincinnati Neighborhood Profile

People			
Indicator	Rank	%	# of Persons
Population	-	-	3,198
Persons over 65	12	8.3%	264
Persons 17 and Under	10	16.8%	536
Children Living w/ Grandparents	21	1.1%	35
Race/Ethnicity:			
Black	-	1.2%	38
white	-	91.0%	2,911
Asian	-	2.3%	74
Other	-	5.5%	175
Latinx	-	1.6%	50
Persons 5 and Older in Households w/ Limited English Ability	26	0.6%	18

Health			
Indicator	Rank	Value	
Life Expectancy	4	84.2	-
Disease Prevalence Estimates:			
	Rank of % w/Condition	% with Condition	Persons with Condition
Asthma	3	7.3%	234
Cancer	13	5.1%	162
Diabetes	1	5.8%	185
Heart Disease	3	3.7%	119
High Blood Pressure	2	20.1%	642
Kidney Disease	1	1.6%	52
Obesity	2	23.6%	755
Lack of Health Insurance	2	4.7%	151
Persons w/ Independent Living Difficulty	2	0.6%	20
Persons Living w/ Disability	1	3.0%	96

Ecosystems and Infrastructure		
Indicator	Rank	Value
Tree Canopy Coverage	5	44.6%
Greenness of Land Surface	9	69.1%
Percent Land in Parks and Greenspaces	6	28.1%
Impervious Surface	6	18%
Heat Island Exposure	10	0.12
Walkability	-	Above Average
Persons w/ Low-Income and Low Food Access	17	11.9%
Transit Accessibility	-	Good
Daytime Population vs. Resident Population	15	61.9%
Commuters Leaving Each Day	-	1,960
Commuters Using Public Transit	1	0.0%

Columbia Tusculum

Cincinnati Neighborhood Profile

Socio-Economic Indicators			
Indicator	Rank	%	#
Persons Living in Poverty	4	4.6%	147
SNAP Recipient Households	2	0.7%	10
Educational Attainment:			
Less than High School	-	0.6%	-
HS or Equivalent	-	3.2%	-
Some College	-	9.1%	-
Associate's Degree	-	2.3%	-
Bachelor's Degree or Higher	-	52.6%	-
Educational Attainment Index	8	0.61	-
Extreme Housing Burdens:			
Renter-Occupied Housing (as % of All Housing Units)	4	36.5%	533
Renters Spending 30% of Income or More on Rent + Utilities	4	9.7%	142
Renters Spending 50% of Income or More on Rent + Utilities	3	2.3%	34
Homeowners Spending 30% of Income or More on Mortgage + Utilities	6	11.9%	110
Average Energy Costs (as % of Income)	3	1.4%	-
Persons without Vehicle Access	2	88.0%	28

Built Environmental Hazards		
Indicator	Relative Exposure Level	Value
Traffic Exposure	Moderate	-
Potential Lead Paint Exposure (Houses Built pre-1960)	High	62.63%
Cancer Risk from Air Pollution	Moderate	-
Respiratory Disease Risk from Air Pollution	Moderate	-
Proximity to Water Pollution Sources	Moderate	-
PM2.5 Levels in Air, µg/m3	Low	9.64
Ozone Concentration, ppb	High	46.71
Diesel Particulate in Air, µg/m3	High	0.86
Proximity to Superfund Sites	High	-
Proximity to Potentially Toxic Industrial Activity	Moderate	-
Proximity to Hazardous Waste Treatment and Disposal Facilities	Moderate	-

Neighborhood Planning	
Indicator	Description
Community Councils	Columbia Tusculum Community Council
Community Development Corporations	NA
Community Plans	Do You Live CT? Columbia Tusculum Community Plan (Ongoing)